



**Job ad reference:** H09SSP07626  
**Role title:** Health Practitioner  
**Status:** Casual (Multiple Positions)  
**Unit/Branch:** Allied Health Relief Pool  
**Division/District:** Statewide Programs (Recruitment)  
Recruitment Performance Unit  
Queensland Health Shared Service Partner  
**Location:** Various  
**Classification level:** HP4

*The role description for this position is currently under review as part of the implementation of the Health Practitioners (Queensland Health) Certified Agreement (No 1) 2007. As a result of the review of the role description, there may be a change to the classification level of this position. Please direct any questions about the review of the role description to the contact officer for the position.*

**Salary level:** \$50.43 - \$54.26 per hour  
**Closing date:** Applications will remain current for 12 months  
**Contact:** Alison Carnell  
**Telephone:** (07) 3170 4205  
**Online applications:** [www.health.qld.gov.au/workforus](http://www.health.qld.gov.au/workforus)  
**Fax application:** (07) 3170 4244  
**Email application:** [Job\\_Vacancy@health.qld.gov.au](mailto:Job_Vacancy@health.qld.gov.au)  
**Post application:** Recruitment Services – Corporate and Statewide, Locked Bag 7004, Chermide Centre, CHERMSIDE QLD 4032

## About our organisation

Queensland Health's mission is 'creating dependable health care and better health for all Queenslanders'. Within the context of this organisation, there are **four core values** that guide our behaviour:

- **Caring for People:** Demonstrating commitment and consideration for people in the way we work.
- **Leadership:** We all have a role to play in leadership by communicating a vision, taking responsibility and building trust among colleagues.
- **Respect:** Showing due regard for the feelings and rights of others.
- **Integrity:** Using official positions and power properly.

## Purpose of role

- To provide short term relief for the relevant Allied Health discipline, predominately in rural and remote areas.

## Staffing and budget responsibilities

- This position will have professional and operational reporting responsibilities.
- *Professional* – reports to a nominated professional support clinician
- *Operational* – reports to the Line Manager/Team Leader of the facility where relieving
- This position may have some staffing and budget responsibilities depending on placement.

## Key accountabilities

- Fulfil the accountabilities of this role in accordance with Queensland Health's core values, as outlined above.
- Exercise high level, autonomous and independent clinical judgement, with limited access to professional supervision in the provision of safe, effective and efficient clinical services including comprehensive assessment, treatment and training in appropriate techniques to individuals, families or carers referred to the service.
- Maintain an up to date awareness of recent evidence and research based advances through participation in continuing education activities.
- Work effectively as a member of the multidisciplinary health service team to ensure comprehensive client management through liaison and collaborative practice with other health professionals regarding patient progress and ongoing care requirements via case conferences, updated reports, discharge summaries, or any other means.
- Participate in the education of other health team members and students where required including the provision of clinical supervision of students and in-services and training programs for staff.
- Participate in relevant organisational meetings, service planning, quality improvement and research activities while providing relief and complete evaluation tools related to the relief pilot program.
- Manage and maintain any systems and reporting required by the service including statistics, performance measures, financial, equipment maintenance and stock management required for the provision of the health service.

### **Qualifications/Professional registration/Other requirements**

- Appointment to this position requires proof of undergraduate or post-graduate professional entry-level qualification and registration with the relevant Registration Board of Queensland, or eligibility for membership or accreditation with the relevant professional body.

### **Key skill requirements/competencies**

- Demonstrated high level of clinical skills and knowledge of current practice in specific discipline.
- Well developed interpersonal, communication and negotiation skills, including the ability to work autonomously and flexibly with initiative in a multi-disciplinary team environment.
- A demonstrated knowledge and understanding of Quality Improvement and Risk Management processes and activities, and the ability to apply these processes and relevant research and evaluation approaches to clinical practice.
- Sound knowledge of contemporary administrative and management issues including human resource management issues such as workplace health and safety, equal employment opportunity, and anti-discrimination.
- Demonstrated commitment to education and training including supervision of students, clinical professional support and continuing professional development.

### **How to apply**

Please provide the following information for the panel to assess your suitability:

- **A short response** (maximum 1–2 pages) on how your experience, abilities, knowledge and personal qualities would enable you to achieve the key accountabilities and meet the key skill requirements.
- **Your current CV or resume, including referees.** Referees should have a thorough knowledge of your work performance and conduct, and it is preferable to include your current/immediate past supervisor. Referees will only be contacted with your consent.
- **Application form** (only required if not applying online).

### **About the Queensland Health Shared Service Partner**

Visit the Area/District/Division website: <http://www.health.qld.gov.au/qhssp/>

### **Health professional roles involving delivery of health services to children and young people**

All relevant health professionals (including registered nurses and medical officers) who in the course of their duties formulate a reasonable suspicion that a child or young person has been

**To find out more about Queensland Health, visit [www.health.qld.gov.au](http://www.health.qld.gov.au)**

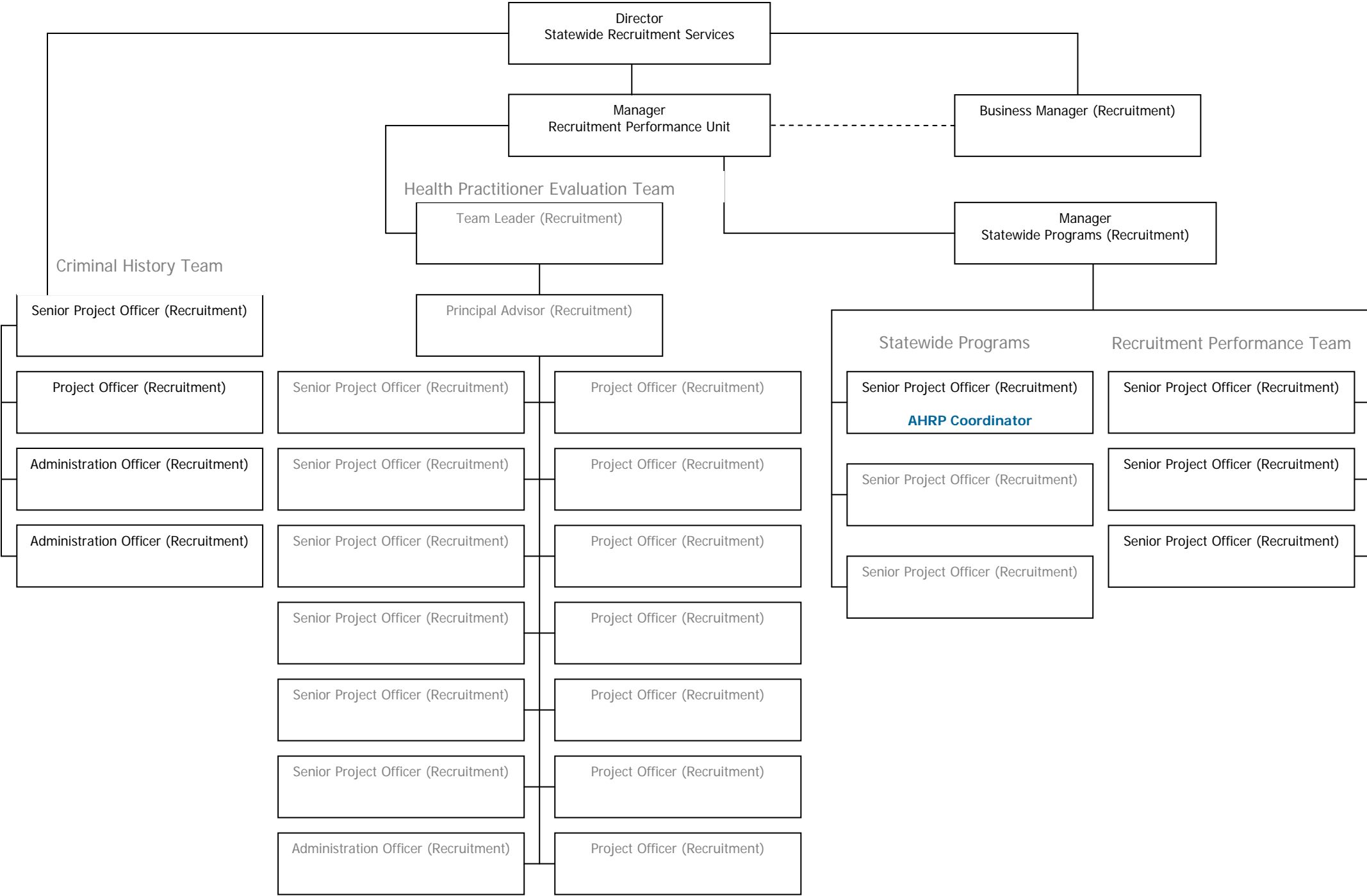
abused or neglected in their home/community environment, have a legislative and a duty of care obligation to immediately report such concerns to the Department of Child Safety.

All relevant health professionals are also responsible for the maintenance of their level of capability in the provision of health care and their reporting obligations in this regard.

**Pre-Employment screening**

Pre-employment screening, including a criminal history check, may be undertaken on persons recommended for employment. Please refer to the Information Package for Applicants for details of employment screening and other employment requirements.

# Recruitment Performance Unit Organisational Chart



Director  
Statewide Recruitment Services

Manager  
Recruitment Performance Unit

Business Manager (Recruitment)

Health Practitioner Evaluation Team  
Team Leader (Recruitment)

Manager  
Statewide Programs (Recruitment)

Criminal History Team

Senior Project Officer (Recruitment)

Principal Advisor (Recruitment)

Project Officer (Recruitment)

Senior Project Officer (Recruitment)

Project Officer (Recruitment)

Administration Officer (Recruitment)

Senior Project Officer (Recruitment)

Project Officer (Recruitment)

Administration Officer (Recruitment)

Senior Project Officer (Recruitment)

Project Officer (Recruitment)

Senior Project Officer (Recruitment)

Project Officer (Recruitment)

Senior Project Officer (Recruitment)

Project Officer (Recruitment)

Senior Project Officer (Recruitment)

Project Officer (Recruitment)

Administration Officer (Recruitment)

Project Officer (Recruitment)

Statewide Programs

Recruitment Performance Team

Senior Project Officer (Recruitment)  
**AHRP Coordinator**

Senior Project Officer (Recruitment)

Senior Project Officer (Recruitment)

Senior Project Officer (Recruitment)

Senior Project Officer (Recruitment)

Senior Project Officer (Recruitment)